



# BlueBox

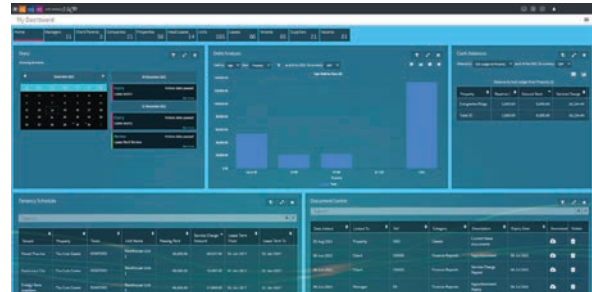
## Property management software for investors



BlueBox is a powerful solution for the larger property investor, providing real-time visibility of your portfolio's financial performance, and a comprehensive database for lease and asset management.

### Benefits

- View portfolio performance in real time
- Ensure no critical lease event date is ever missed
- Allow clients, tenants and suppliers to 'self-serve' via Mojo interfaces
- Integrate easily with other best-of-breed applications
- Save labour with intelligent automation of processes



### Description

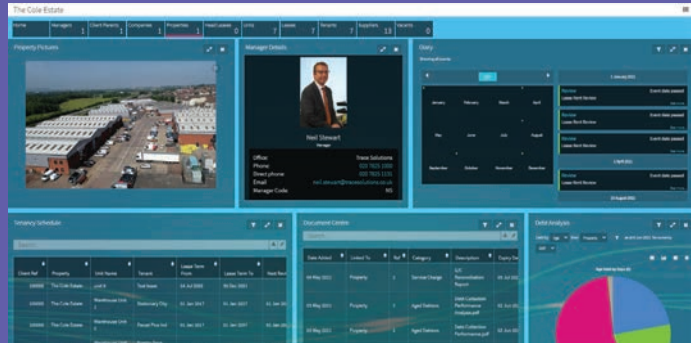
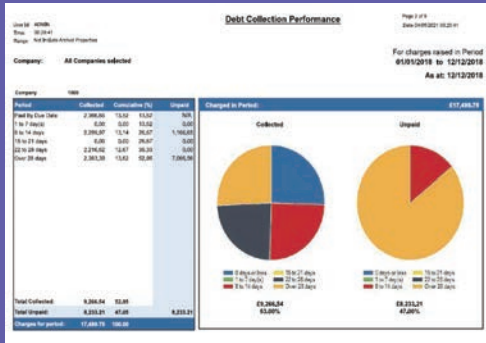
BlueBox gives you maximum visibility of the performance of your portfolio, while also supporting all your property management needs.

Unlike other multi-user enterprise systems, BlueBox requires little or no bespoke development. It's quick and easy to implement – and to upgrade.

At its heart is a multi-ledger accounts system, purpose-

designed for property. This handles complex service charging with ease, and complies with all relevant regulations. Routine processes can be automated.

The database provides a 'single source of truth' for data, dates and transactions. Web dashboards show the performance of your portfolio in real time, and there are over two hundred standard reports.



## What's included

- Mojo
- Over 200 reports as standard, plus an integrated report writer.
- Fully integrated multi ledger accounting.
- Multi-currency support for cross-border portfolios.
- Integration with other best-of-breed applications.
- Configurable user interface to match each person's job function.
- Property database & diary for lease and asset management.
- Intelligent automation of transactions, including bank reconciliations, with 'management by exception' functionality.
- Full regulatory and standards compliance.
- SaaS (online) or server-based systems.
- A full range of 'bolt-on' utilities to add specialist functionality.

## BlueBox: now with added Mojo

- Included within the BlueBox system is Mojo, a unique eco-system of web-based apps which make the individual processes of property management faster, simpler – and better.
- There are multiple Mojo apps, ranging from lease input forms (with up to five levels of approval), to sophisticated dashboards that display real time portfolio information for your clients or investors.
- Mojo engages all your staff, automatically putting the right app in front of the right person at the right time. It ensures that all the data stored in your system is accurate and fully approved. It permits real time reporting and enquiries. And it allows suppliers, tenants, clients and investors to self serve.
- In other words, Mojo revolutionises the process of property management.



## Get a demonstration

Please get in touch with Adam Mackay on +44 (0)20 7825 1299 or email us at [hello@tracesolutions.co.uk](mailto:hello@tracesolutions.co.uk).

*"A godsend during Covid remote working... intuitive ... thanks to its simplicity, it's easier to find things within the system. It's also helped us to win new business."*

Tom Bellis, financial director, Langtree

Enterprise-grade property management software

tracesolutions

Trace is based in the City of London at **224-232 St John Street London EC1V 4QR**